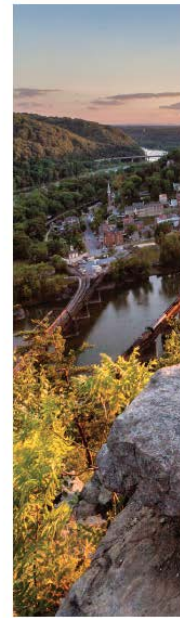




Network for Landscape CONSERVATION

Advancing the Practice of Conservation at the Landscape Scale

Pathways Forward: Progress and Priorities in Landscape Conservation



Emily M. Bateson

Chesapeake Conservation Partnership Annual Meeting

October 23, 2018

We are in a transformative moment

1872: National
Parks

1980s: Land Trusts

Today: Landscape
Conservation



Network for Landscape
CONSERVATION

www.landscapeconservation.org

Why Landscape Scale?

- A shift in geographic scale
- A shift in perspective
- A shift in process



Network for Landscape
CONSERVATION

www.landscapeconservation.org

About the Network for Landscape Conservation

The Network for Landscape Conservation advances collaborative, cross border conservation as an essential approach to connect and protect nature, community, and culture.



Network for Landscape
CONSERVATION

www.landscapeconservation.org

A stylized map of the United States is shown in the background. The landmass is composed of several overlapping, wavy shapes in shades of green and yellow-green. To the right of the landmass is a large, dark blue, rounded shape. The text 'October 2014' is written in white on the left side of the map.

October 2014

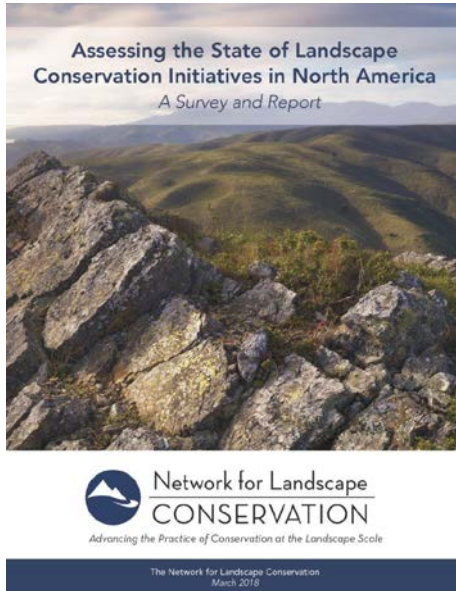
**National Workshop on
Large Landscape
Conservation**



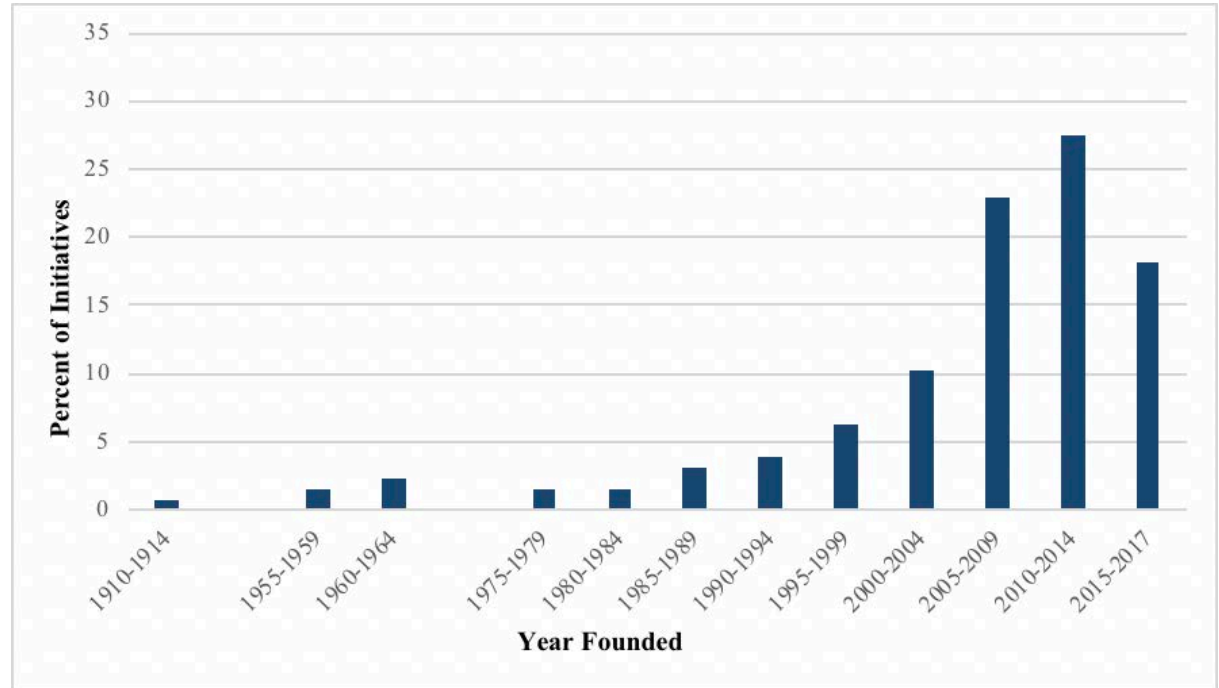
Network for Landscape
CONSERVATION

www.landscapeconservation.org

The Rapid Growth of Landscape Conservation



Summary report and more information available on the NLC website



Network for Landscape
CONSERVATION

www.landscapeconservation.org

The National Forum on Landscape Conservation

November 2017

A Strategic Dialogue on:

Challenges &
Opportunities

*

Lessons
Learned

*

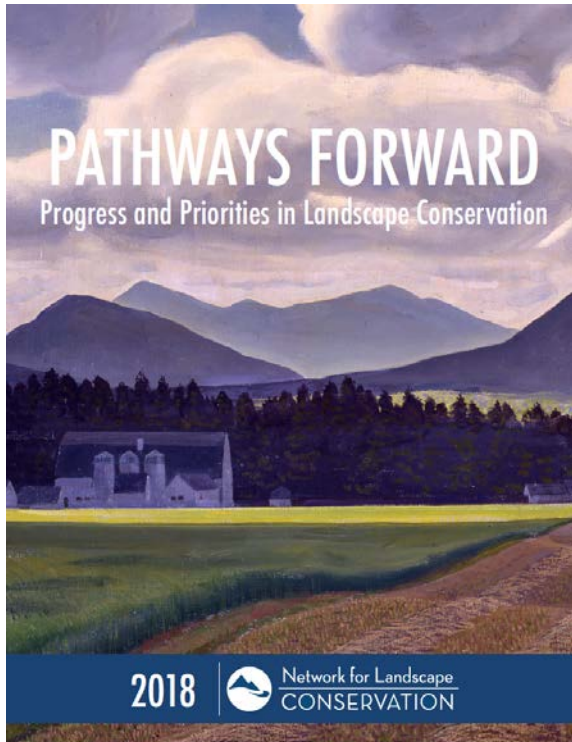
Pathways
Forward



Network for Landscape
CONSERVATION

www.landscapeconservation.org

Pathways Forward: Progress and Priorities in Landscape Conservation



1. Collaboration
2. Communications and engagement
3. Science
4. Funding and Finance
5. Policy

Chapter 1: The Central Role of Collaboration

“Today, ‘us versus them’ is the prevailing culture nationally. Truthfully, we had to blow up that kind of thinking Tahoe to be where we are today....We made a 180-dgree change. We made PARTNERSHIP our bedrock concept.”

– Joanne Marchetta, Executive Director of the
Tahoe Regional Planning Agency



The Central Role of Collaboration



- Built on trust and respect
- Collaborative Skills
- Shared Base of Knowledge
- Enduring Social Capital
- Backbone Support is Key



Chapter 2: Reimagining Communications and Engagement

1. Lead with listening



“You can’t go in with the answer. You can’t go in with all the information, the coolest maps, and all the things that drive the decision-making that we do. You have to figure out what the community wants and build from there.

—National Forum speaker

2. Harness the power of storytelling



Stories connect:

- ✓ People to each other
- ✓ People to the land
- ✓ People to a shared body of knowledge



Network for Landscape
CONSERVATION

www.landscapeconservation.org

Chapter 3: Advancing Science-Based Conservation Planning

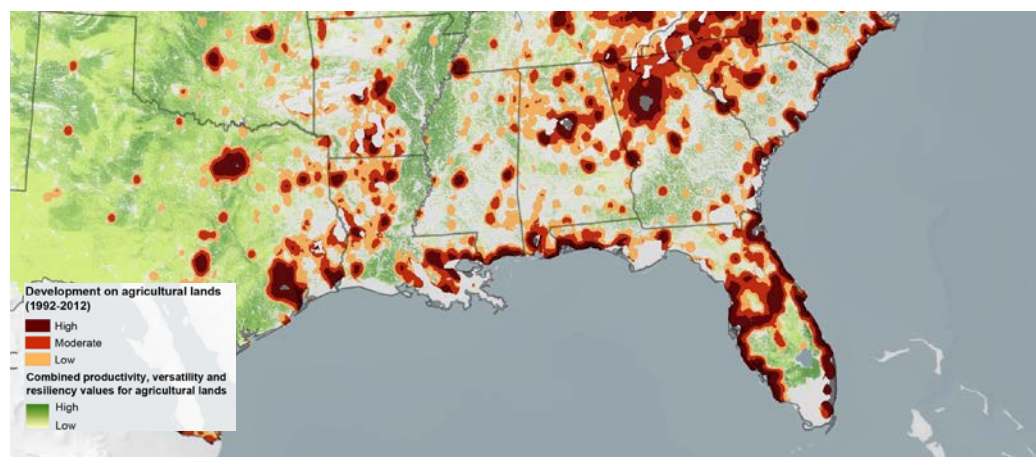
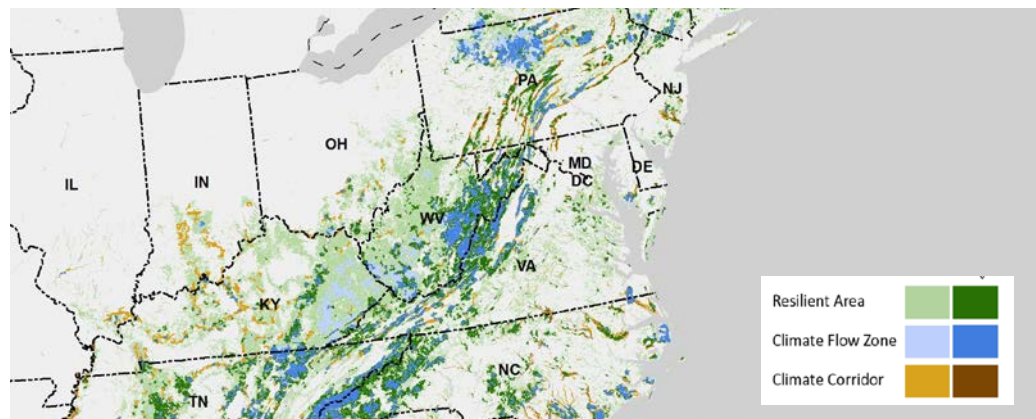
“Scientific information in the landscape conservation arena is exploding—we have more information than we have ever had, and we are starting to solve problems we could not have solved even five years ago.”

– Mark Anderson, The Nature Conservancy



Advances in Science-Based Conservation Planning

- High resolution data
- Understanding dynamic systems
- Multidisciplinary analysis & planning
- Role of landscapes in climate mitigation & adaptation



The Climate Agenda is a Landscape Conservation Agenda

“[Natural climate solutions] offer a powerful set of options for nations to deliver on the Paris Climate Agreement while providing soil productivity, cleaning our air and water, and maintaining biodiversity.”

—Griscom et al. 2017. Natural Climate Solutions



Network for Landscape
CONSERVATION

www.landscapeconservation.org

Chapter 4: Investing in an Enduring Landscape Future



1. Landscapes provide tangible ecosystem services worthy of investment

During Hurricane Sandy in 2012, intact coastal wetland systems helped absorb the impact of the storm and saved the coastal states affected more than \$625 million in direct flood damages.





2. Investment in Ecosystem services is growing rapidly

- Green bonds
- Water-focused markets
- Climate markets
- Coastal Land and Hazard Mitigation

—**Recommended Resource:** conservationfinancenetwork.org



3. Both increased traditional funding and new approaches are necessary

- Local, state, and federal funding
- Private philanthropy

But also:

- Funding natural resource-based markets
- Funding “backbone” support for collaboration



Network for Landscape
CONSERVATION

www.landscapeconservation.org

Chapter 5: Aligning Policy to Support Landscape Conservation



- 1. Build on existing land conservation programs**



2. Support Specific Landscape-Scale Needs

- Reliable, long-term sources of funding
- Research, data, and planning tools at scale
- Extensive and persisting collaboration
- Private land management and assistance
- Cross-disciplinary engagement
- Climate policy



Landscapes bring us together



Network for Landscape
CONSERVATION

www.landscapeconservation.org

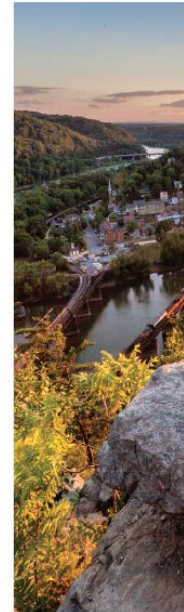
For more information on the Network:

Network Coordinator, Emily Bateson: emily@largelandscapes.org

www.landscapeconservation.org

Visit our website to:

- ✓ *Read Pathways Forward.*
- ✓ *Sign up for the bi-monthly Landscape Conservation Bulletin.*
- ✓ *Join us as a Partner*



Network for Landscape
CONSERVATION

www.landscapeconservation.org