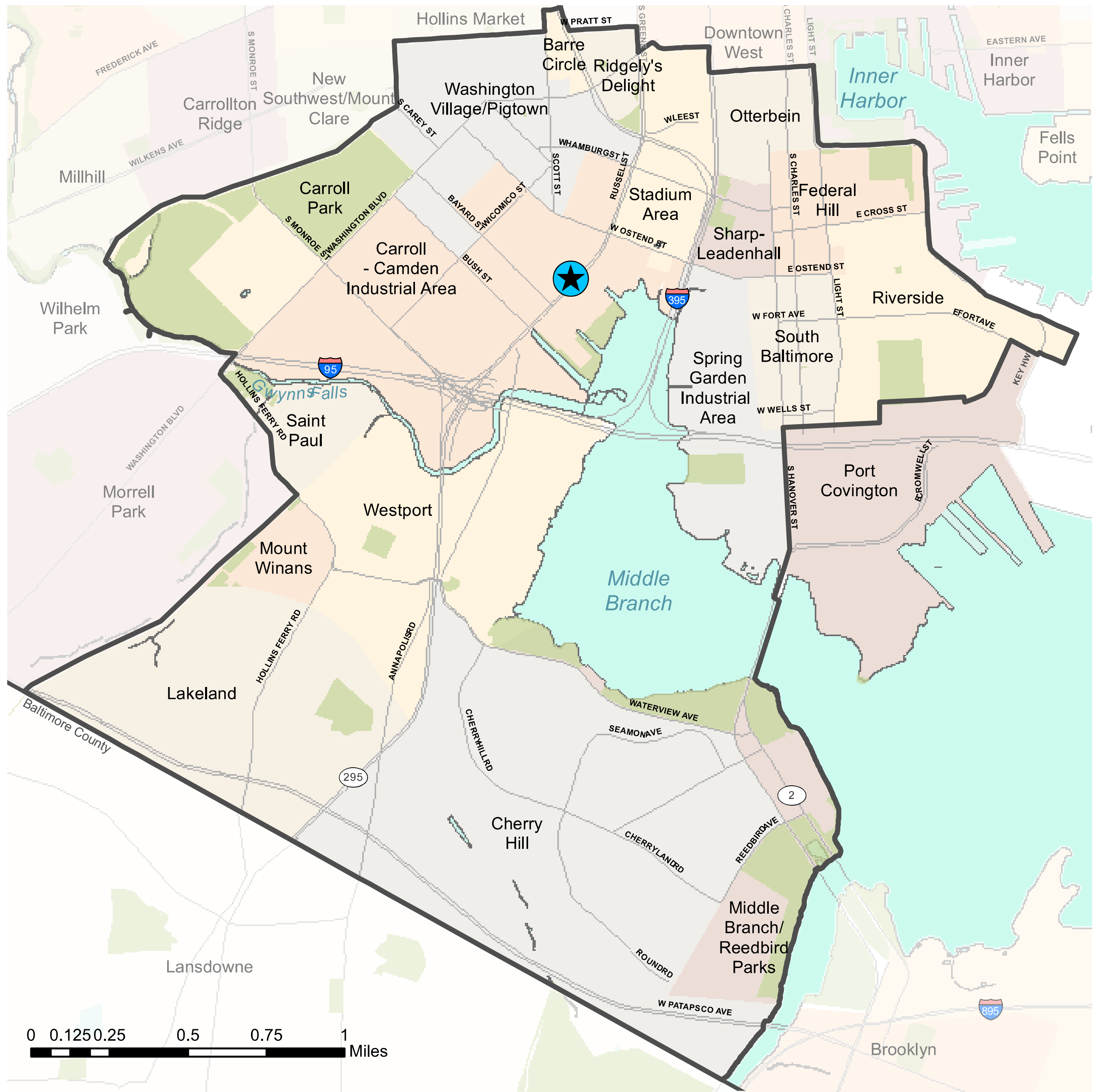


SOUTH BALTIMORE **GATEWAY PARTNERSHIP**



MAG Presentation
10-12-2022





Our Board of Directors

Alvin Lee

ABC Ventures, Cherry Hill resident

Beth Whitmer

Federal Hill Neighborhood Association

Bill Reuter

Ridgely's Delight Association

Brandon M. Scott

Mayor of Baltimore (Proxy: Scott Davis)

Council Member Eric Costello

City Council, District 11 (Proxy: Neal Friedlander)

Debbie Ally-Dickerson

WORK Printing and Graphics, Pigtown (Proxy: Fredy Diaz)

Geoffrey W. Washington

Adelberg Rudow Dorf & Hendler, Riverside resident

Randy Conroy

SVP & General Manager, Horseshoe Casino

Jasmine Esteve

Sharp-Leadenhall Improvement Association

Kelly Quinn

The Choice Program at UMBC, Riverside resident

Michael Tyson

Mt. Winans Community Association (Proxy: Jayne Jenkins)

Nancy Mead

Otterbein Community Association

Noah Smock

Baltimore Community ToolBank, Carroll-Camden Industrial Area

Council Member Phylicia Porter

City Council, District 10

Quincy Goldsmith

Southwest Baltimore Charter School

Rev. Alvin Gwynn

Leadenhall Baptist Church

Rev. Willie Pack, Sr.

Minister, Hemingway Temple AME Church; Cherry Hill Ministerial Alliance

Sandy Brennan

Citizens of Pigtown Community Association (Proxy: Diante Edwards)

Sophia Silbergeld

Adeo Advocacy

Veronica Crosby

Lakeland Community Association Partnership, Harbor West Collaborative

Our Strategic Plan Focuses On Three Topics:

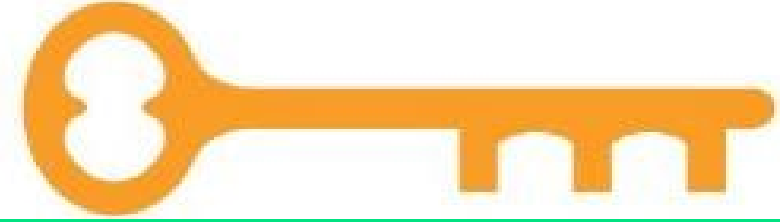
1. **Environmental Sustainability:** Improve parks, public spaces, and waterways.
2. **Health and Wellness:** Expand access to healthy foods, wellness programs and space for recreation and physical activity.
3. **Community Development & Revitalization:** Help neighborhoods to attract the kinds of investment they are looking for.



The Partnership Has Three Program Areas:

Program Area	%	Approx. FY23 Budget
Community Grants	20%	\$1.25 Million
Enhanced Services	30%	\$1.85 Million
Transformational Projects	50%	\$3.0 Million

**SOUTH BALTIMORE
GATEWAY PARTNERSHIP**



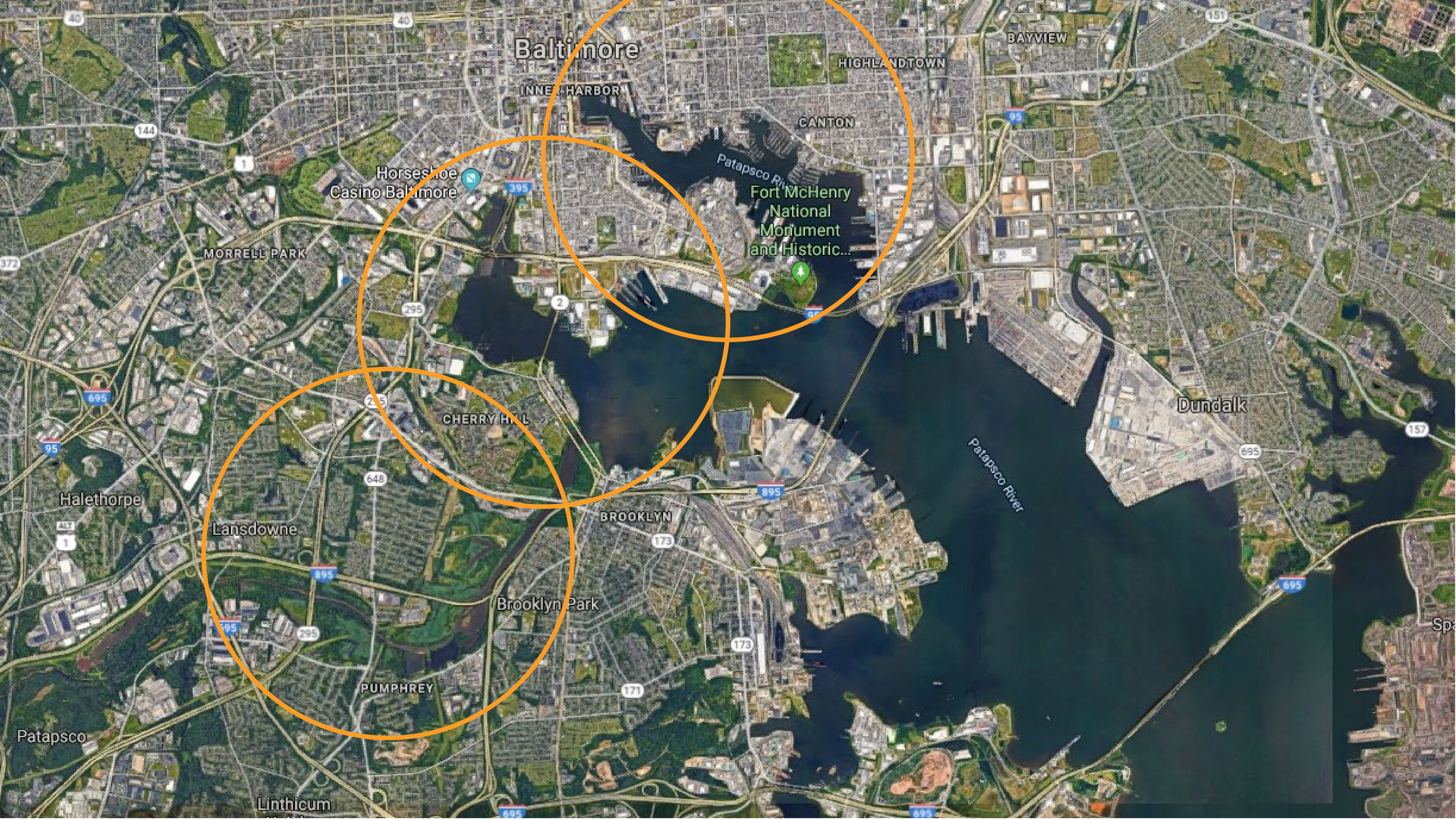
REIMAGINE MIDDLE BRANCH

Parks, projects & programs to
connect communities in South
Baltimore



**Brandon M. Scott
Mayor**





Baltimore

INNER HARBOR

HIGHLANDTOWN

BAYVIEW

CANTON

Fort McHenry
National
Monument
and Historic...

Horseshoe
Casino Baltimore

MORRELL PARK

Dundalk

CHERRY HILL

Halethorpe

Lansdowne

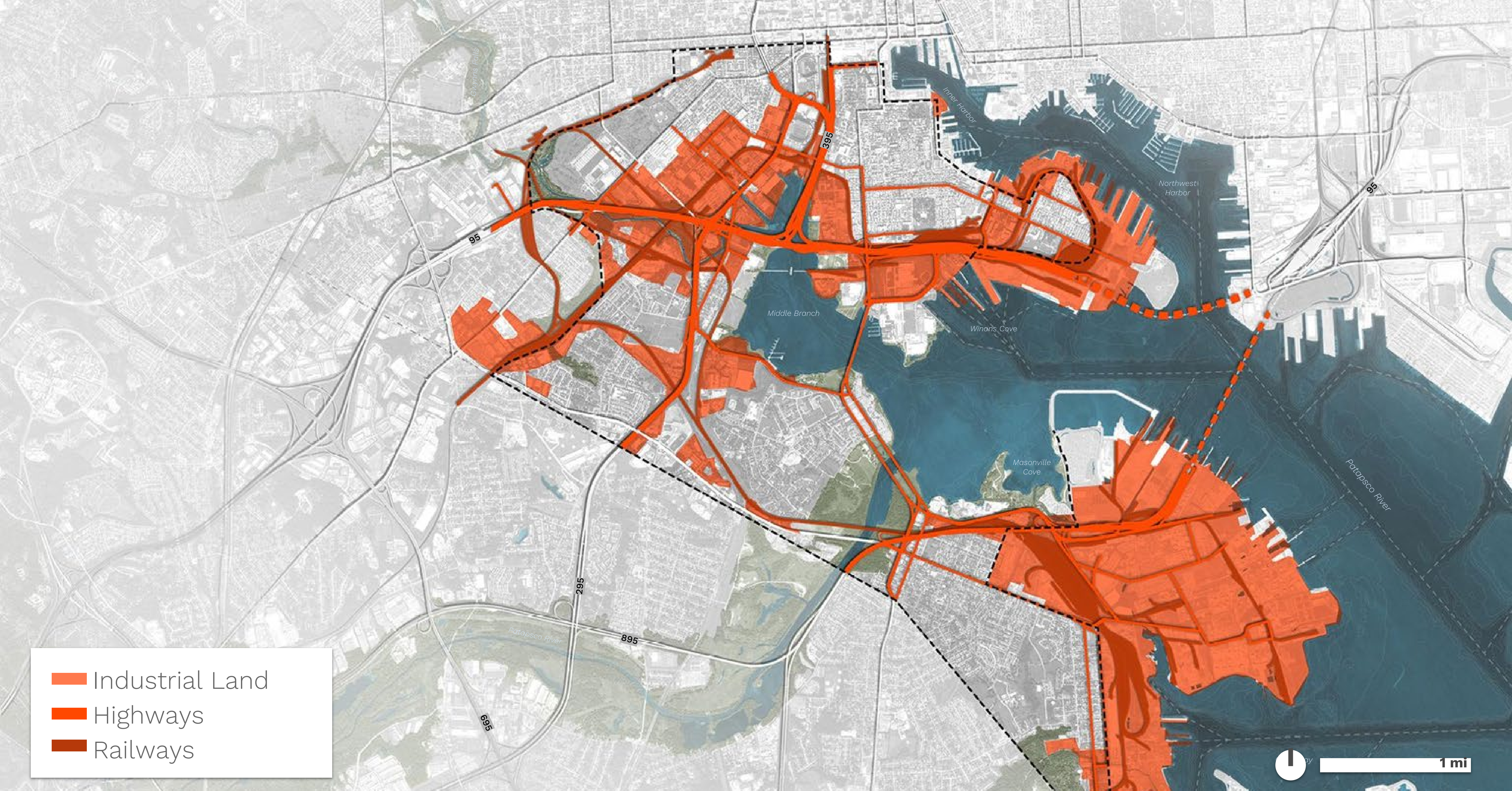
BROOKLYN

Brooklyn Park

PUMPHREY

Patapsco

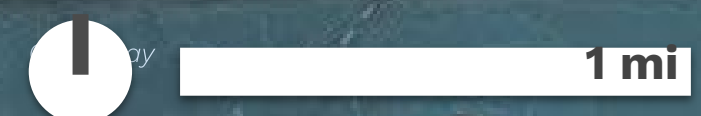
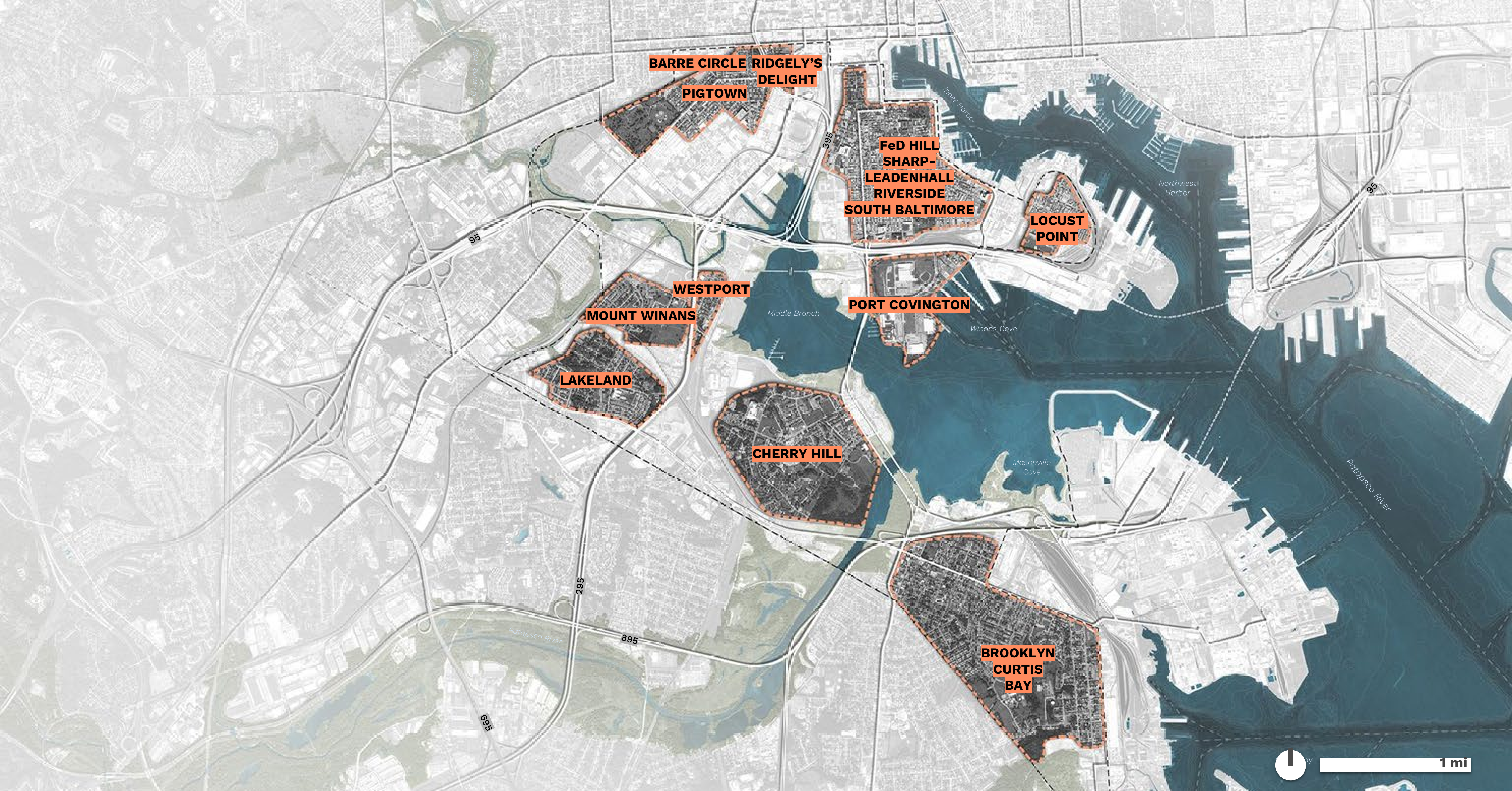
Linthicum



- Industrial Land
- Highways
- Railways

BARRIERS

REIMAGINE MIDDLE BRANCH



9 NEIGHBORHOOD 'ISLANDS'

REIMAGINE MIDDLE BRANCH











LITTLE HANOVER AND POTEE BRIDGES CROSSING THE PATAPSCO

REIMAGINE MIDDLE BRANCH



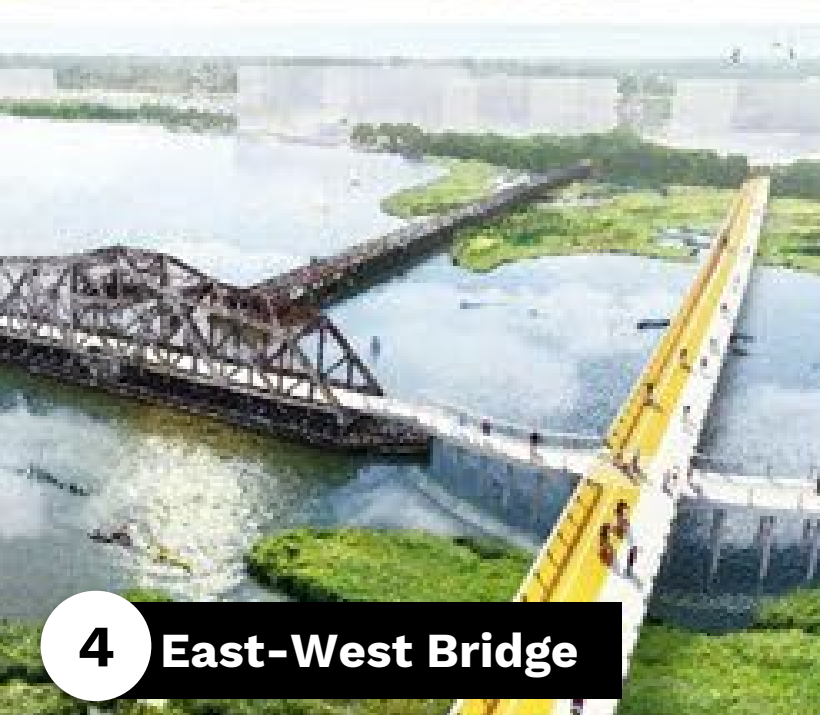
1 Underpass Park



2 Ridgely's Cove Boardwalk



3 Swann Park



4 East-West Bridge



5 Black Sox Park



6 Smith Cove



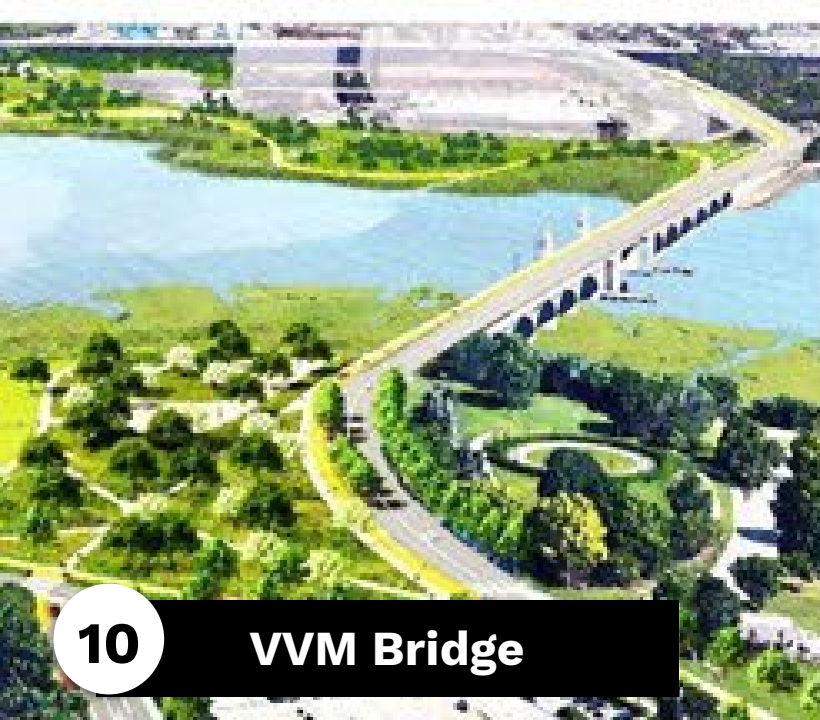
7 Boathouse and Beach



8 Event Pavilion



9 Hilltop Playground



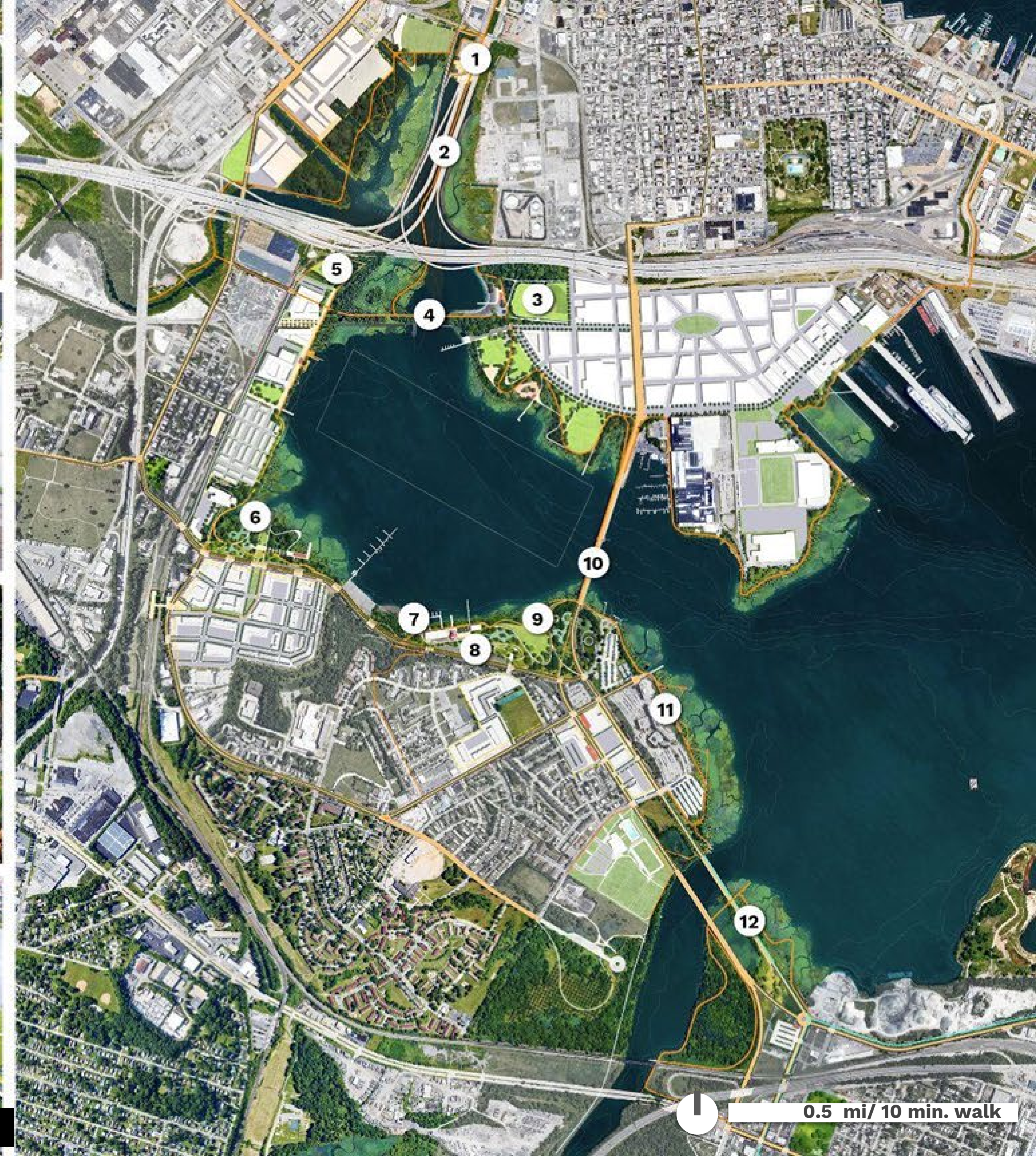
10 VVM Bridge



11 Middle Branch Trail



12 Hanover and Potee Bridges



0.5 mi/ 10 min. walk



MIDDLE BRANCH PARK AND CHERRY HILL

REIMAGINE MIDDLE BRANCH

Cherry Hill Ripken Field

SBGP collaborated with BCRP and the Ripken Foundation to complete a **\$3 million turf field** in Cherry Hill.

SBGP paid for approximately half of the cost.



\$25 Million Middle Branch Fitness & Wellness Center

SBGP provided \$2.2 million in critical gap funding to construct the **Middle Branch Fitness & Wellness Center**.

The nicest recreation campus in Baltimore, it will feature indoor and outdoor pools, indoor and outdoor basketball courts, indoor and outdoor tracks, and four multipurpose fields.





Carroll Park Recreation Center

SBGP is reopening this **shuttered Rec Center** after 20 years.

It is being designed with a “**Campus Model**” connects this building to the nearby park, playground, skate park, and school gymnasium



South Baltimore Gateway Sports Network

SBGP funds **Free Youth Sports in Low-Income Communities.**

Often these are operated by nonprofit **Community-Based Providers.**

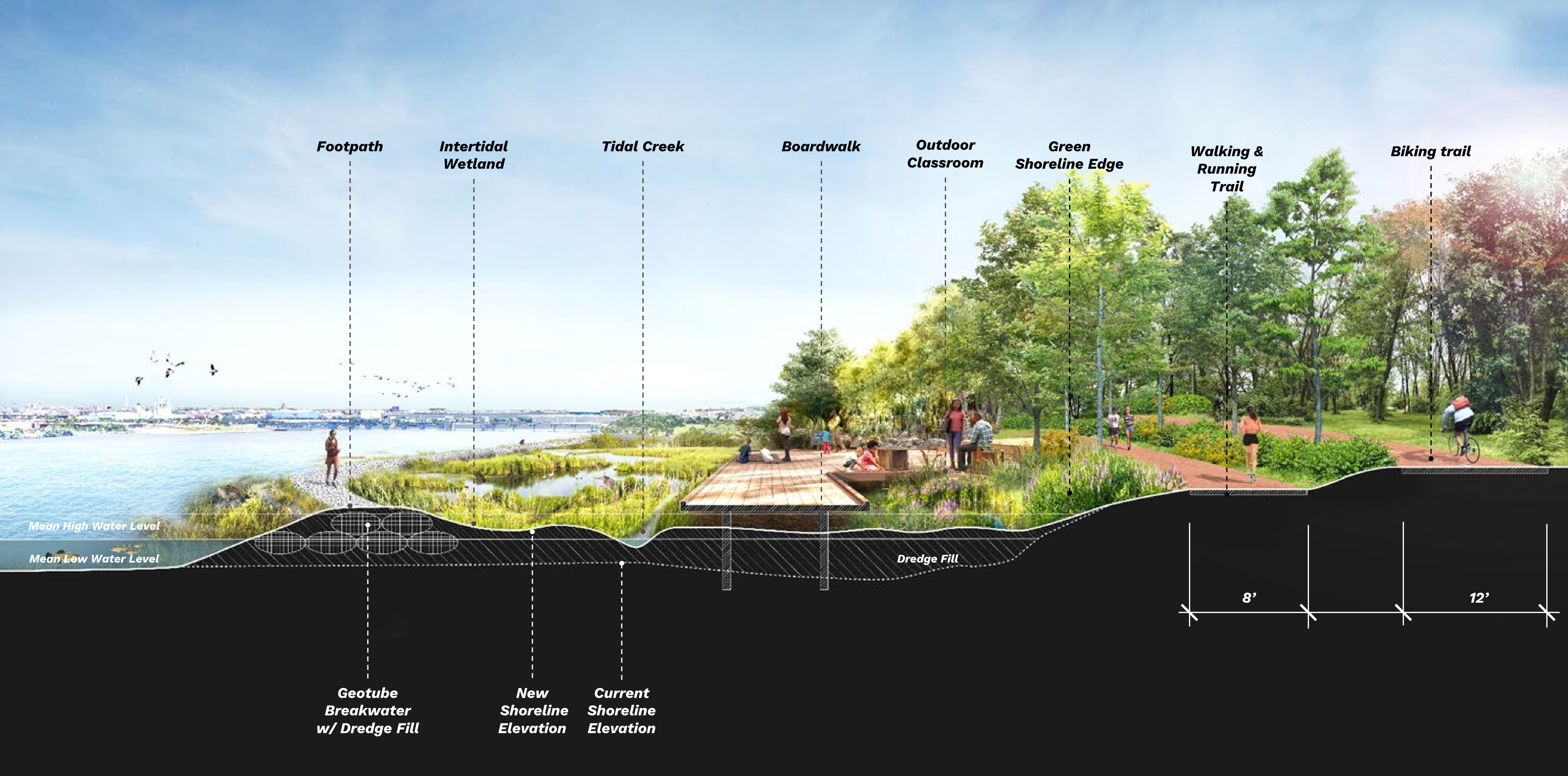
SBGP is also investing in **Trauma-Informed Coaching** training.

Youth Fitness & Enrichment Programs

SBCP funds youth programs such as:

- Cherry Hill Eagles
- Restoring Inner City Hope
- Westport Patriots
- Baltimore Community Rowing
- My Girls Gymnastics
- Westport Boys & Girls Club
- Pigtown Climbs





A NEW GREEN AND CONNECTED SHORELINE

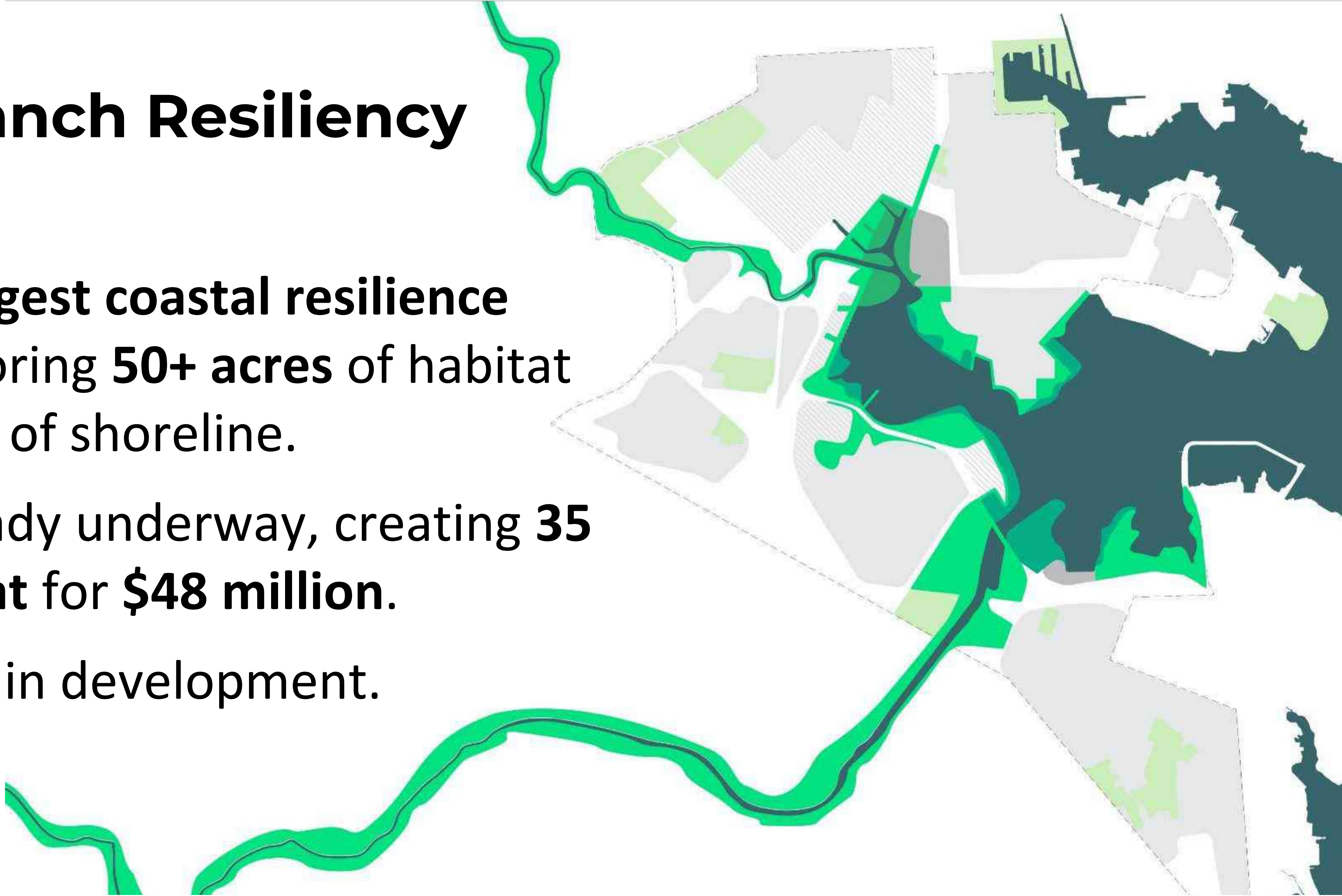
REIMAGINE MIDDLE BRANCH

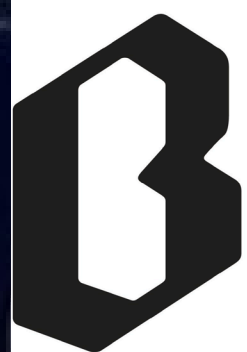
Middle Branch Resiliency Initiative

Maryland's **largest coastal resilience** initiative, restoring **50+ acres** of habitat along **11 miles** of shoreline.

Stage 1 is already underway, creating **35 acres of habitat** for **\$48 million**.

Stage 2 is now in development.





THE
BALTIMORE
BANNER



Middle Branch preservation and redevelopment project kicks off with \$48 million in grants

5 YEAR MAP

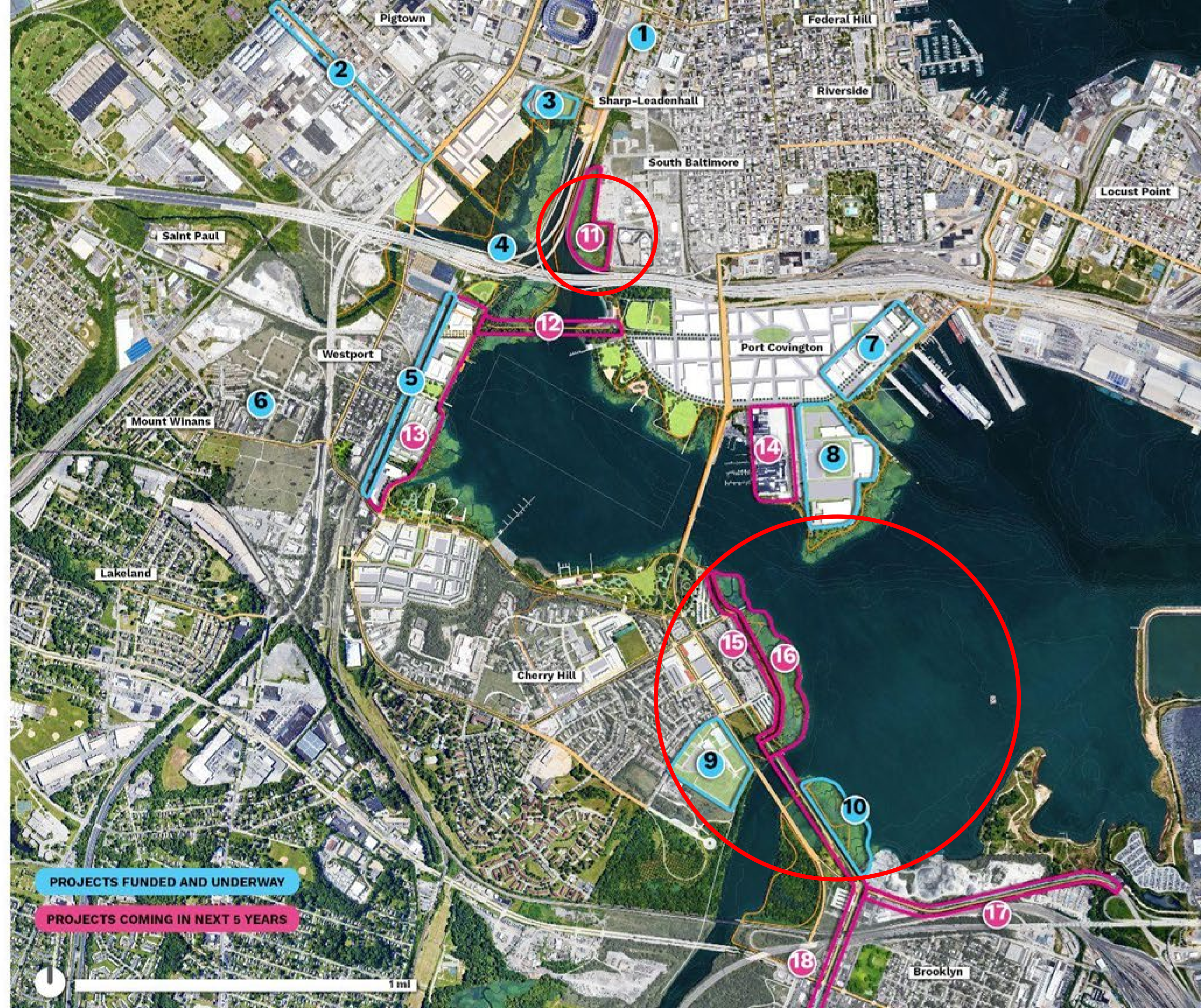
Projects Funded and Underway

1. Solo Gibbs Park
2. Bush Street
3. Top Golf
4. Gwynn's Falls Trash Wheel
5. Annapolis Road
6. Florence Cummins Park
7. Port Covington Phase 1
8. Under Armour
9. Cherry Hill Wellness + Fitness Center
10. Resiliency Wetlands

Projects Coming in Next 5 Years

11. Resiliency Wetlands
12. East-West Pedestrian Bridge
13. One Westport
14. Locke Insulator
15. Middle Branch Park Trail
16. Frankfurst Trail
17. Baybrook Connector

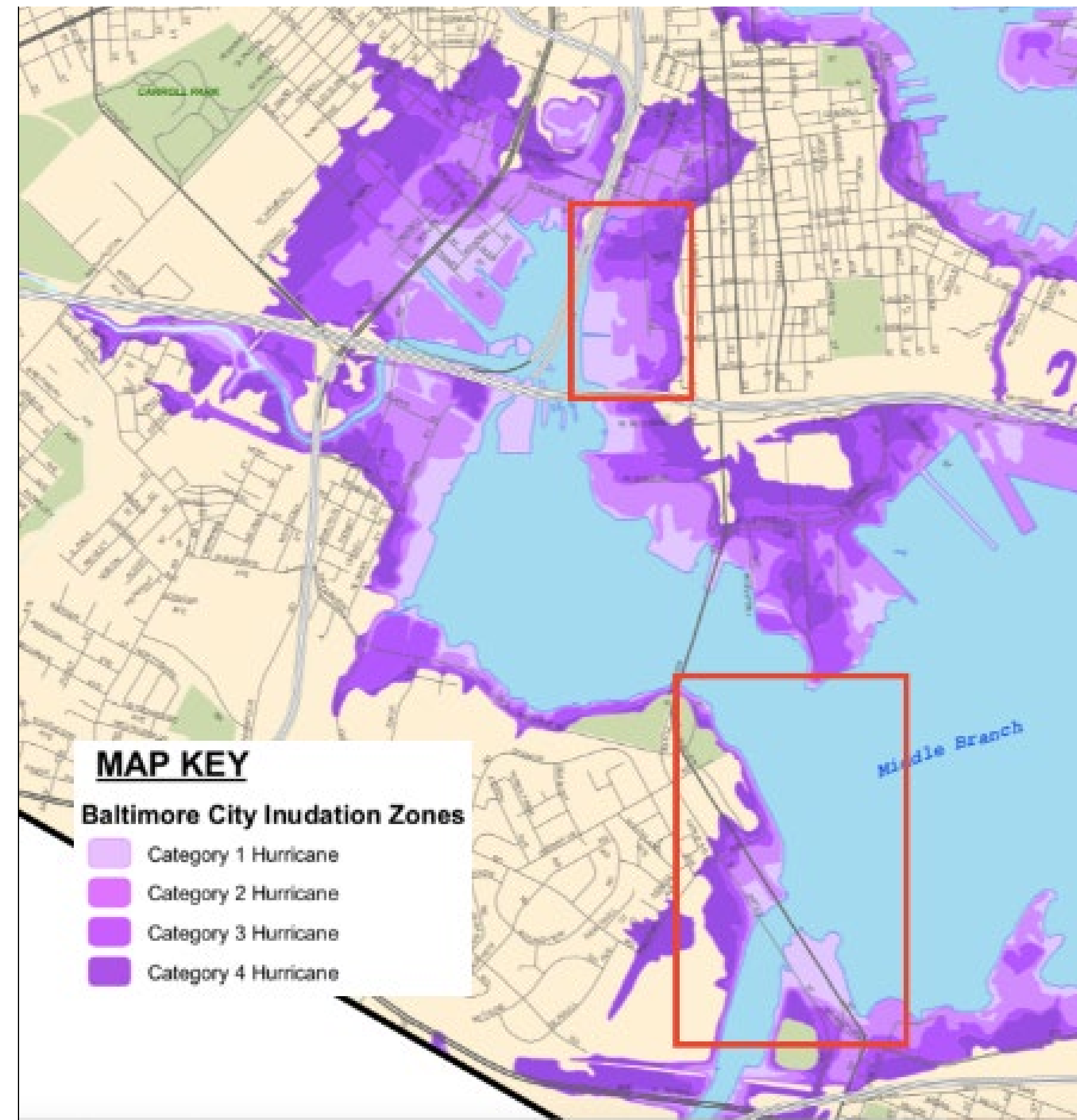
REIMAGINE MIDDLE BRANCH



Chronic Flood Risk to Critical Infrastructure



NOAA Coastal Flood Exposure Mapper



Baltimore City Hurricane Inundation Map



Baltimore City Nuisance Flooding Map

Middle Branch Resiliency Initiative: Stage 1



5 YEAR MAP

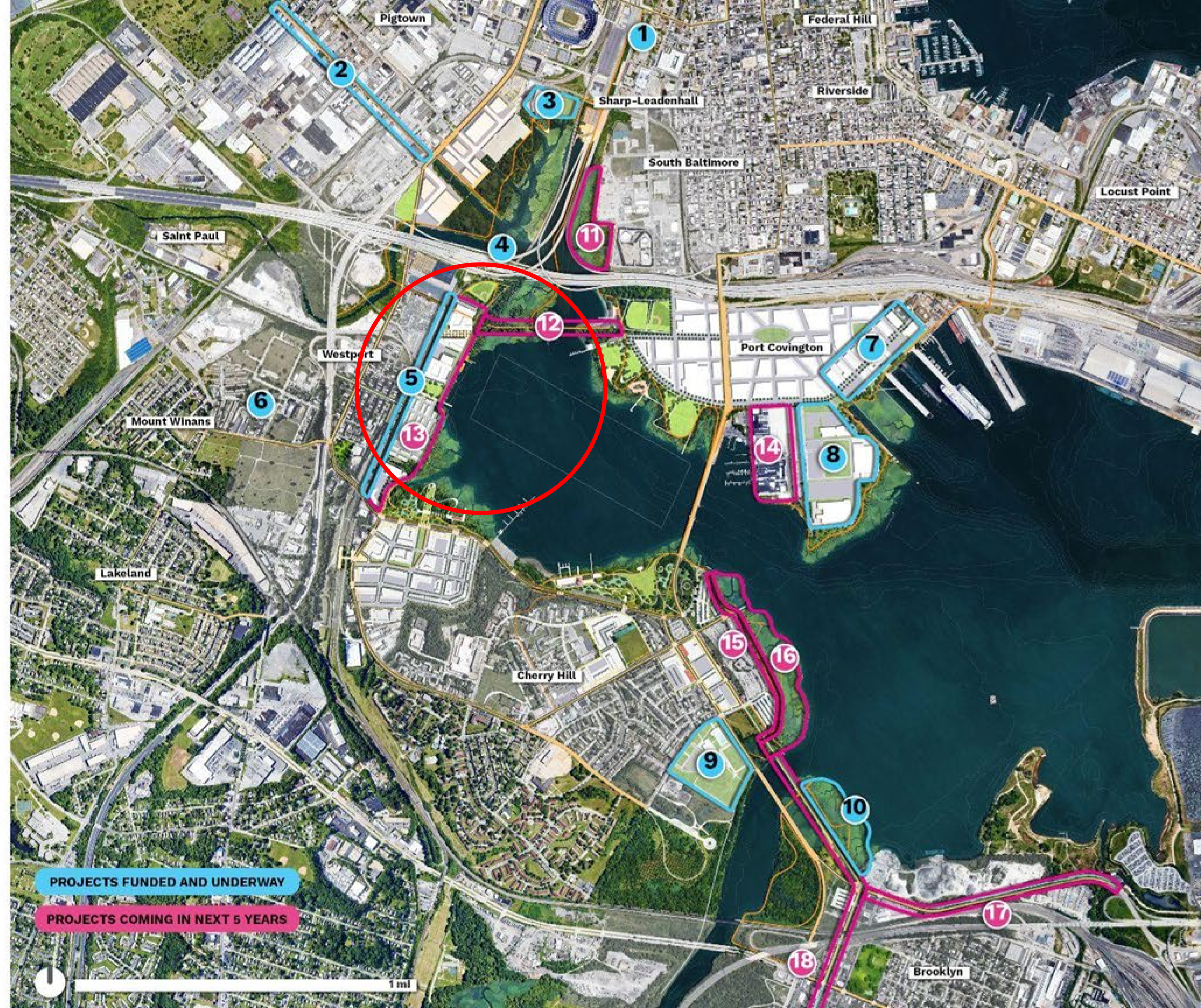
Projects Funded and Underway

1. Solo Gibbs Park
2. Bush Street
3. Top Golf
4. Gwynn's Falls Trash Wheel
5. Annapolis Road
6. Florence Cummins Park
7. Port Covington Phase 1
8. Under Armour
9. Cherry Hill Wellness + Fitness Center
10. Resiliency Wetlands

Projects Coming in Next 5 Years

11. Resiliency Wetlands
12. East-West Pedestrian Bridge
13. One Westport
14. Locke Insulator
15. Middle Branch Park Trail
16. Frankfurst Trail
17. Baybrook Connector

REIMAGINE MIDDLE BRANCH



Gwynnns Falls Trash Wheel



Westport-Port Covington Footbridge



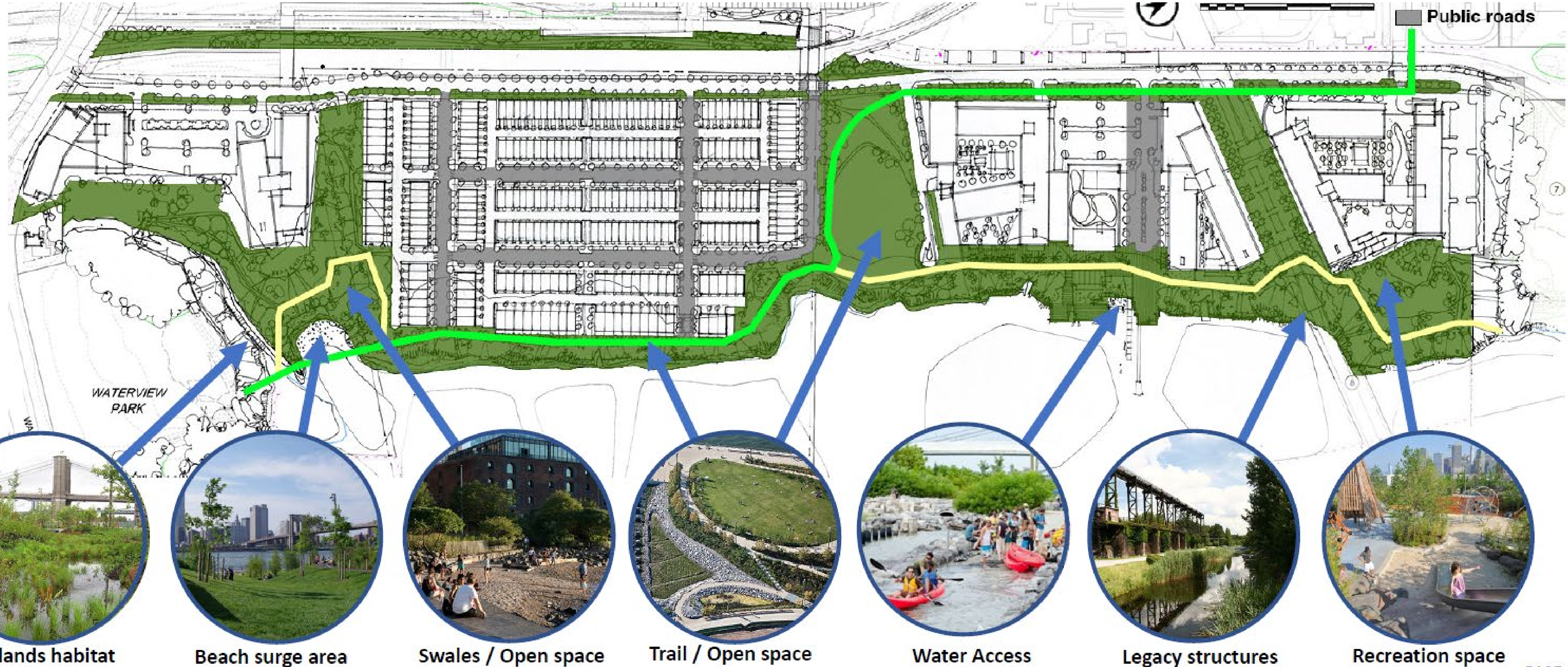
Proposed Black Sox Park Memorial



Major New Westport Waterfront Park



Major New Westport Waterfront Park







\$500,000 / year for YouthWorks Summer Jobs

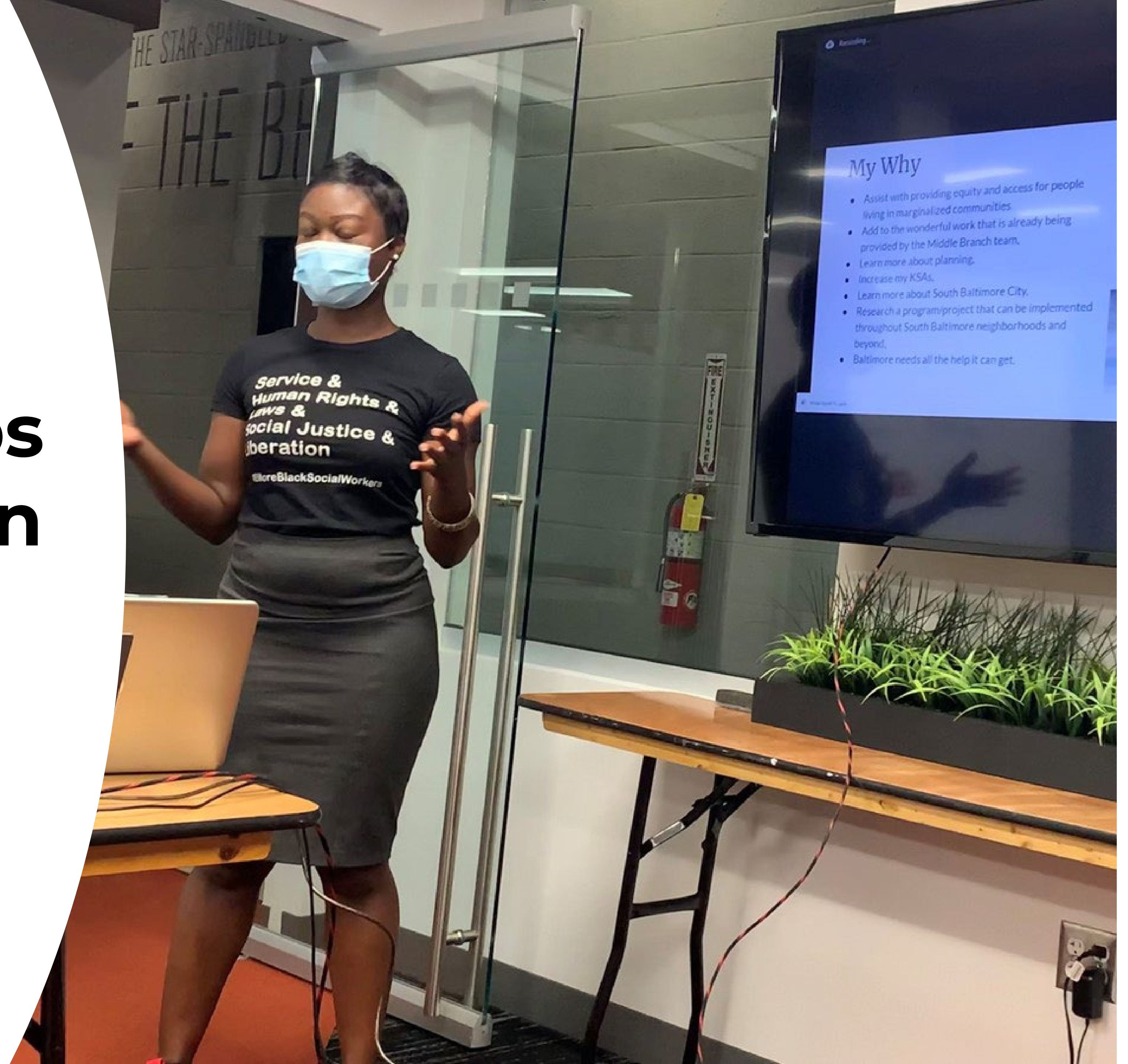
With LDC funds we are hiring **YouthWorks** workers from South Baltimore to support local nonprofits and community groups working around the **Middle Branch**.





Paid Fellowships for HBCU Design Students

The **Middle Branch Fellowship** paid MSU graduate students to **work directly on the design**, alongside world-class experts. Their research will directly inform the final outcome.



Planned Native Plant Nursery

We are developing plans for a **nonprofit-led nursery** to grow and sell the native plants needed to restore the Middle Branch.





\$900,000 for Local CDCs

We are providing **three years of operating support** to three local Community Development Corporations. This is **year three**. They will acquire property **before gentrification**.



Thank You

