



U.S. Department of the Interior
Bureau of Land Management

Federal Land Acquisitions Panel





Identifying a Land Acquisition

- **Identify a Priority Acquisition**
 - Agency Priority (Field Office, District Office)
 - Willing Landowner
 - Landowner Expectations (Value and Timing)
- **Coordinate with all the Parties (Agency, Non-Fed Partner, Landowner)**
 - Initial Inspections (Physical and Title)
 - Start Due Diligence (Appraisal, Boundary Survey, Etc.)
- **Partnerships**
 - About 80% of BLM LWCF Projects are supported by a non-Fed Partner



LWCF Requested Project Criteria

- Conserves or Protects Against Threats to Resources, Advancing the America the Beautiful Initiative
- Benefits Justice40 or Underserved Communities or Provides for Equity
- Responds to or Anticipates Climate Change Impacts
- Demonstrates Strong Local Partner Support
- Project Readiness
- Provides Access to BLM Ranked Dingell Act Nominated Parcels
- BLM State Director's Priority
- Inflation Reduction Act (IRA) Restoration Landscapes



LWCF Recreational Access Criteria

- Recreational Access Benefits Justice40 or Underserved Communities or Provides for Equity
- Conserves or Protects Against Threats to Resources, Advancing the America the Beautiful Initiative by Securing Recreational Access
- Recreational Access Quantity and Quality
- Demonstrates Strong Local Partner Support
- Project Readiness
- Provides Access to BLM Ranked Dingell Act Nominated Parcels
- BLM State Director's Priority
- IRA Restoration Landscapes

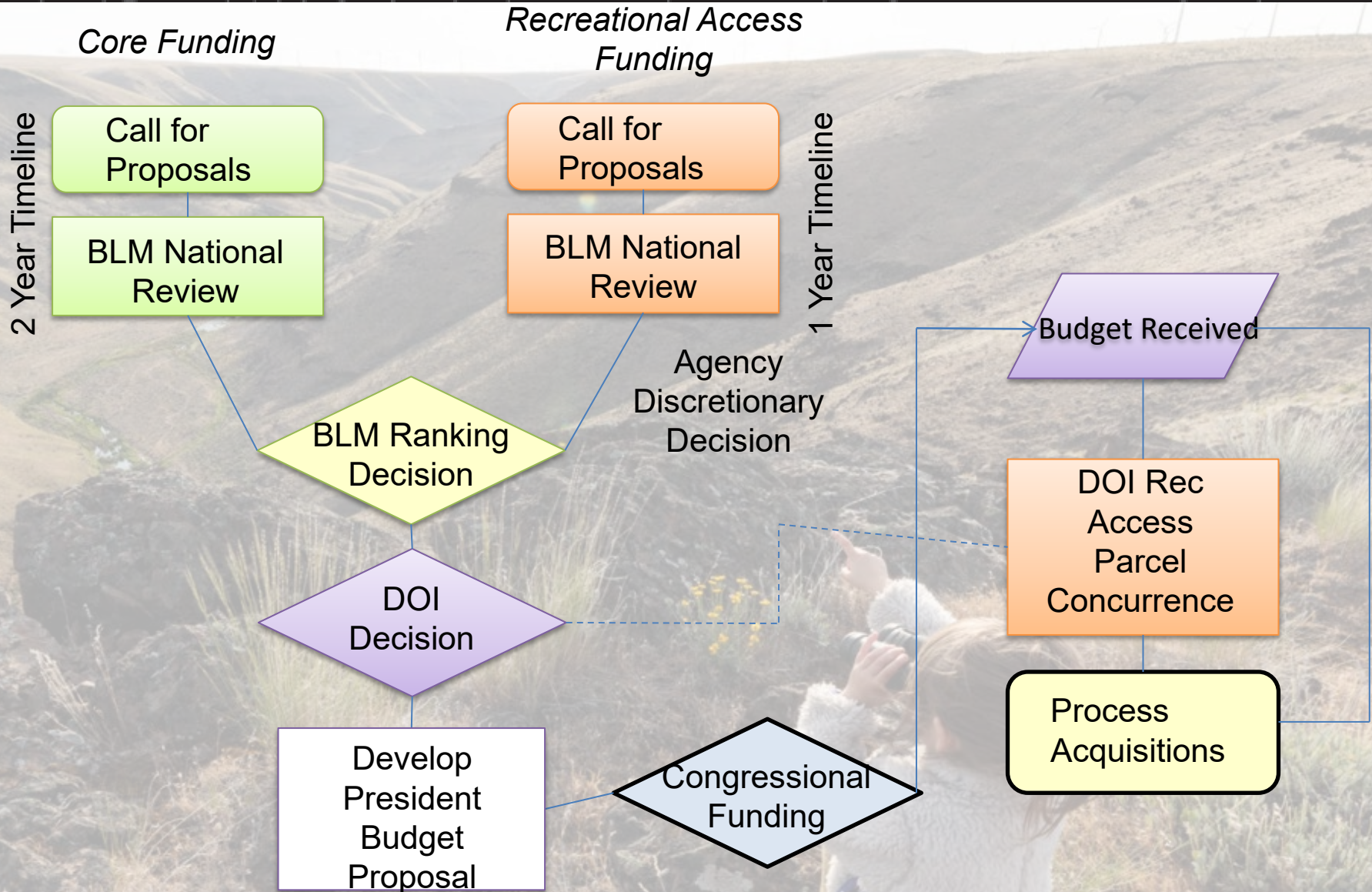


LWCF Project Selection Process

- **Call for Projects – Feb to April**
- **Assemble National Review Team – April**
 - 1 Voting and 1 Alternate (Directors Office/Wildlife/Lands and Realty/Recreation and National Conservation Areas/Legislative Affairs)
 - 2 Voting and 2 Alternate Managers (District or Field Manager)
 - Non-Voting Advisors
- **Pre-Review and Preliminary Ranking – May**
- **Final Review and Ranking Recommendation – May/June**
- **Director Briefing – June**
- **ASLM Approval – Early July**
- **Submit List to DOI – July 20**



LWCF Project Selection Process





LWCF Budget

FY2023 Enacted Budget

- Projects: \$27,940,000
- Rec Access: \$20,500,000
- Emergency/Inholding: \$13,500,000
- Acquisition Management: \$8,137,000

\$70,077,000 Total

FY2021 Total: \$66,050,000

FY2022 Total: \$67,419,406

FY2024 Projected Totals

Pres. Budget: \$73,877,000

House Marks: \$76,177,000

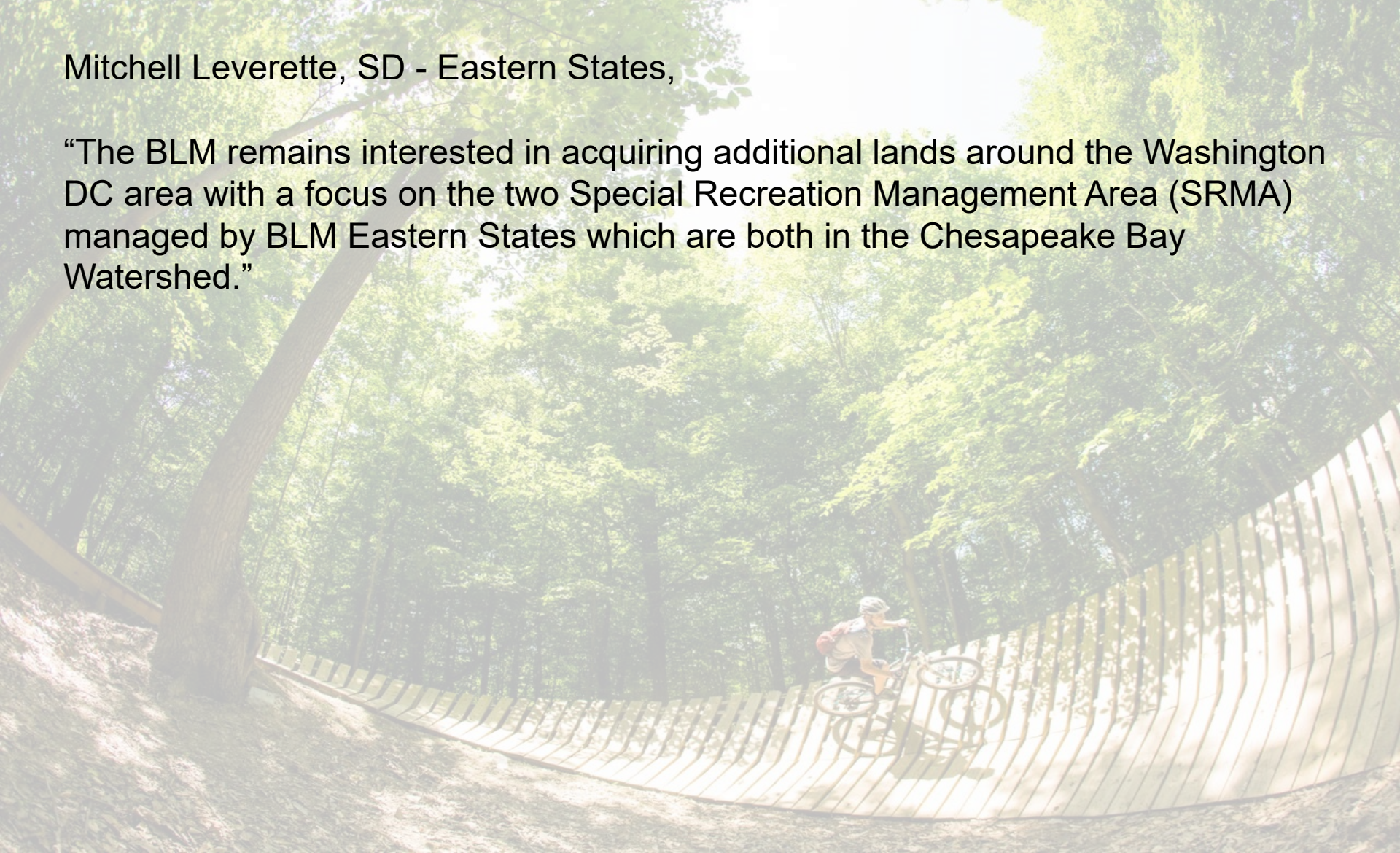
Senate Marks: \$62,377,000



LWCF and the Chesapeake Bay

Mitchell Leverette, SD - Eastern States,

“The BLM remains interested in acquiring additional lands around the Washington DC area with a focus on the two Special Recreation Management Area (SRMA) managed by BLM Eastern States which are both in the Chesapeake Bay Watershed.”





LWCF and the Chesapeake Bay

Meadowood SRMA (Virginia), is managed by BLM Eastern States as a key component of the Federal and State parks, refuges, and other preserves on the Mason Neck Peninsula that have been protected from development. Meadowood SRMA focuses on three core programs:

- Recreation,
- Environmental education, and
- Wild horses and burros.

Douglas Point SRMA (Maryland) is part of the Nanjemoy Natural Resource Management Area which is jointly managed by the BLM and the Maryland Department of Natural Resources. This area, one of the last remaining undeveloped tracts along the Potomac River, offers outstanding potential for:

- Recreation,
- Wildlife habitat,
- Cultural resources.



BLM LWCF

Questions ?

