

USDA FOREST SERVICE REGIONS 8 & 9 LANDOWNERSHIP ADJUSTMENT PROGRAMS



Why does the agency do land adjustments?

Goals and Objectives

- Pursue National Forest's priority acquisitions and land adjustments that meet important resource needs, and Agency Mission.
- Consolidate Ownership patterns.
- Provide access to federal lands for management and public needs.

Primary Funding Source

- Land and Water Conservation Fund
 - Great American Outdoors Act 2020
 - Permanently Authorized
 - Fully-funded program
 - 2nd Largest Program within the agency
 - \$130M annually

Types Funding Sources

- **Land & Water Conservation Fund Core Projects**
 - Typically for large/expensive tracks
 - Managed nationally
 - Specific criteria identified with the nomination process
 - Recreation, T&E species, watershed, partnerships, etc.
- **Recreation Access**
 - Acquisitions to resolve key recreation needs for increasing access for hunting, fishing, and other recreation activities.
 - Smaller in size
 - Funds managed regionally
- **Critical Inholding**
 - Acquire high priority lands, such as wilderness and lands of significant value in designated conservation units to consolidate ownership.
 - Smaller in size – Inholdings
 - Funds managed regionally

Forest and Regional Program

National Forests:

- Forest seeks and evaluates priority acquisitions for their forest needs.
- Forest communicates with NGO partners and landowners.
- Processes and maintains casefile.

Regions:

- Prioritize projects that are evaluated/submit to national office
- Provide oversight, review, on cases submitted by Forests.

Region 8 Timing

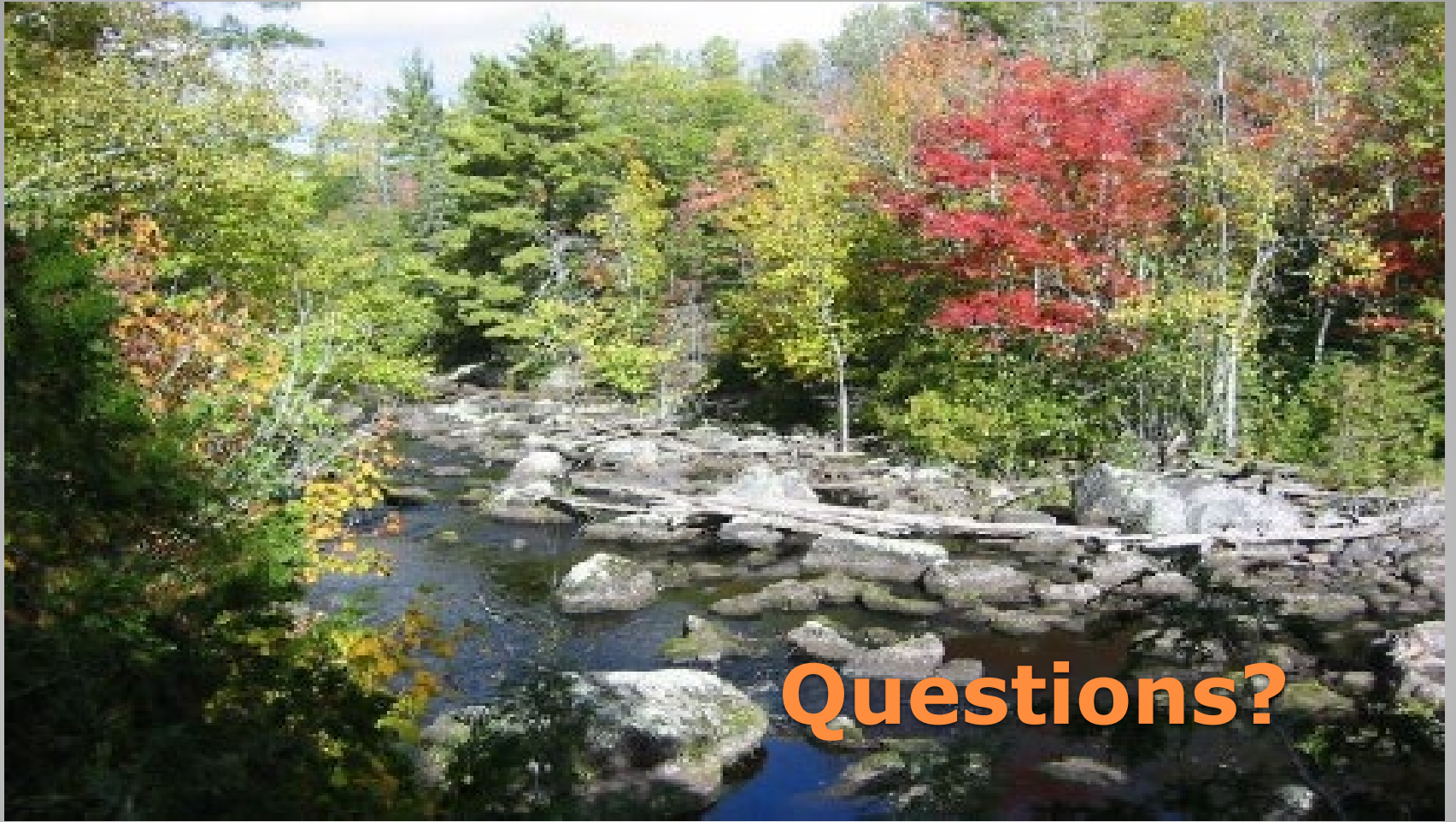
Replies Due for nominations:

- LWCF Core nominations – Usually September each year
- Recreation Access – end of each calendar year
- Critical Inholding – also end of each calendar year

Region 9 Timing

Replies Due for nominations:

- LWCF Core nominations – July 31, 2024
- Recreation Access – September 1, 2024.
- Critical Inholding – September 1, 2024.



Questions?